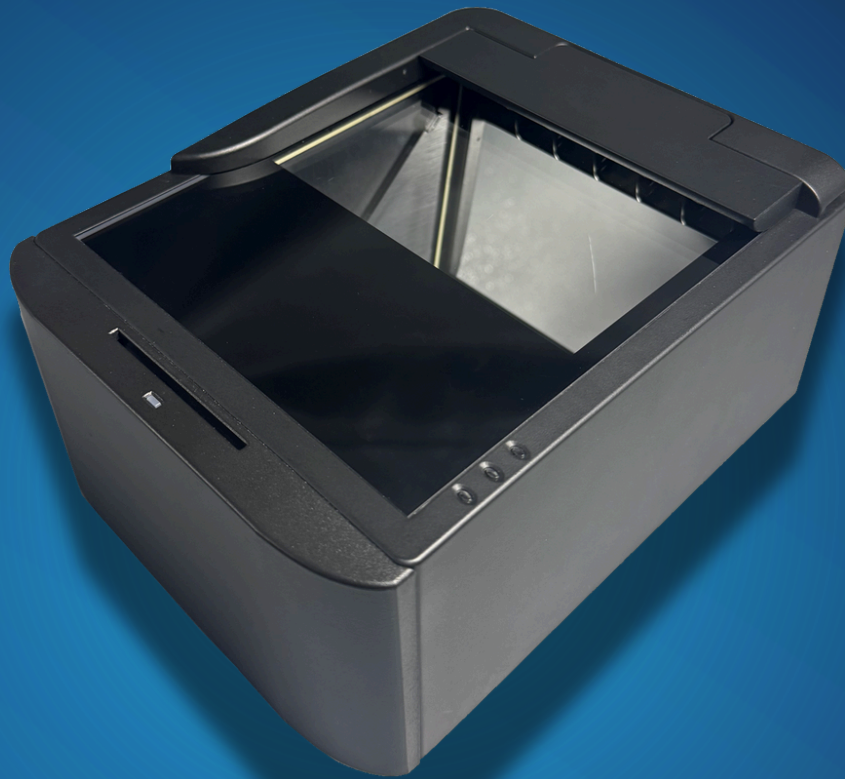


MARKLAND

MEPR500+SCR

ID & Document Reader



The MEPR500+SCR is a compact, high-performance **full page** reader built for easy integration into kiosks, eGates, and terminals. Designed for passports, ID-1 documents, driving licence and visas, it scans both sides in one pass, speeding up ID checks.

With its **document**, **contact** and **contactless** reading capability, it delivers fast and accurate results. Paired with complete SDK, it integrates smoothly and supports secure identity verification across industries from aviation to hospitality.

MARKLAND

MEPR500+SCR

Document Reader



Aviation

Enables fast and secure passenger document verification at check-in and boarding gates using OCR, MRZ, and NFC reading.



Border Management

Supports high-security identity checks by reading travel documents and biometric data for automated and manual border control processes.



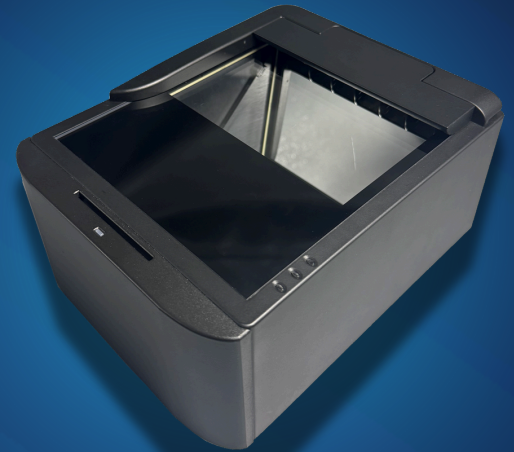
Kiosks

Powers self-service kiosks by automatically scanning passports, IDs, and barcodes for user onboarding and authentication.



Hospitality

Streamlines guest check-in by instantly capturing and verifying ID documents and passport information at hotel reception systems.






FEATURES

Connection Types

 USB 2.0

Image Capture

-  Visible
-  Ultraviolet
-  Infrared

Technology

-  NFC / RFID
-  QR/Barcode
-  OCR
-  Contact Smart Card

Contact Sales >>>

MEPR500+SCR

Document Reader

MARKLAND

Credential Reading

Document Reader

Type	Full-page document reader
Document Formats	Passports (TD1), Identity Card and Driver Licence (TD3), Visa (TD2)
Document Types (OCR)	<ul style="list-style-type: none">• ICAO compliant travel documents in near infrared (IR)• ICAO 9303 specification Parts 1-4 (2 & 3-line MRZ)• Near ICAO compliant travel documents (e.g. French ID)• ISO-18013 driving licences (1-line MRZ)
MRZ Reading	MRZ 1, 2, and 3 line reading with $\geq 99.8\%$ accuracy
Glass Platen	92mm x 125mm
Image Formats	JPG, BMP
Illumination	Visible/white, near IR B900, UV-A LED
Resolution	400 dpi
Capture Speed	< 2s
Indicator	Red LED (Read Error), Blue LED (Ready), Green LED (Reading)

Contact Card Reader

ID Formats	ID-1 format
ID Types	ISO/IEC 7816 compliant
Speed	Up to 600 kbps, TA1=97
Interface	PC/SC compliant device

Contactless Card Reader

ID Formats	National IDs, Passports
ID Types	ISO/IEC 14443 A&B Part 1 - 4 ISO14443/ISO18092
Speed	Up to 848 kbps, T=CL
Interface	PC/SC compliant device

Barcode Reader

QR Formats	Support internal 1D/2D scanner
-------------------	--------------------------------

MEPR500+SCR

Document Reader

MARKLAND

SDK

SDK	Full SDK Support
-----	------------------

Electronics

Power Supply	External 5VDC 2A
--------------	------------------

Power Supply Voltage	100 - 240VAC, Frequency 50 - 60Hz
----------------------	-----------------------------------

Host Minimum	USB 2.0
--------------	---------

Host Minimum	Windows 7 & above, Android 4.6 or above
--------------	---

Host Recommended	Windows 7 & above, Android 4.6 or above
------------------	---

Physical

Dimensions	8.35" x 6.42" x 3.74" (without light shield)
------------	--

Package Size	14.57" x 10.24" x 9.84"
--------------	-------------------------

USB Cable	1.5 m
-----------	-------

Body	Black PC/ABS
------	--------------

Weight	Net < 1.3 kg Gross < 2.3 kg
--------	-------------------------------

Protection	IP50
------------	------

Thermal

Temperature	Operating at 0°C to 50°C
-------------	--------------------------

Storage	-20° to 50° C
---------	---------------

Humidity	20-95% non-condensing
----------	-----------------------

Meet MEPR 500 Series

MARKLAND

Full Page Document Reader



Model		MEPR 500	MEPR 500+	MEPR 500+ SCR
Illumination	Visible	√	√	√
	IR	√	√	√
	UV	√	√	√
	Glass Platen	125* 92 mm		
Contact Card Reader		×	×	600 kpbs
Contactless Card Reader		×	848 kpbs	848 kpbs
Speed		< 1s	< 2s	< 2s
Resolution		400 DPI		
QR Code Reader		√	√	√
√ Yes X No				